



## Writer

word processing



## Calc

spreadsheet



## Impress

presentations



## Draw

vector graphics



## Base

database



## Chart

business graphics



## Math

math formulas



## Scripts

automation

- LibreOffice is the leading open source office productivity suite
- LibreOffice runs on Windows, Mac OS and Linux, and handles all of your existing documents in their original formats
- Compatible with ISO standards
- Download it today from **www.libreoffice.org**, and in 10 minutes you will be working on your first document
- **Free today - unlocked forever**



**LibreOffice**  
The Document Foundation

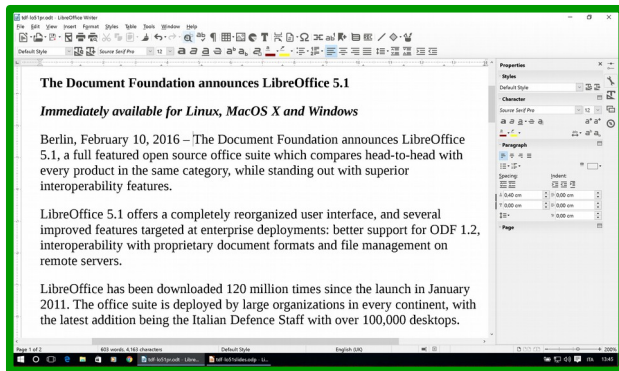


**LibreOffice**  
The Document Foundation

**Free Software  
office suite for  
enterprises  
and public  
administrations**



**ENTERPRISES**

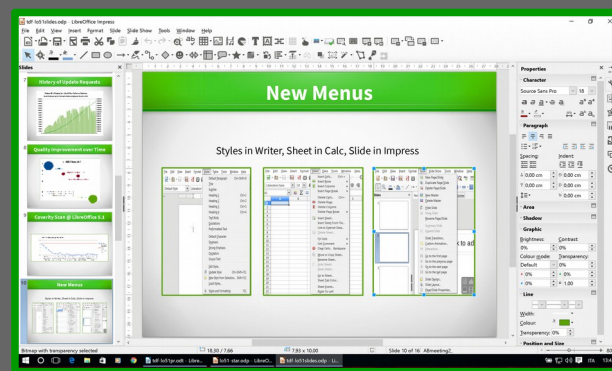
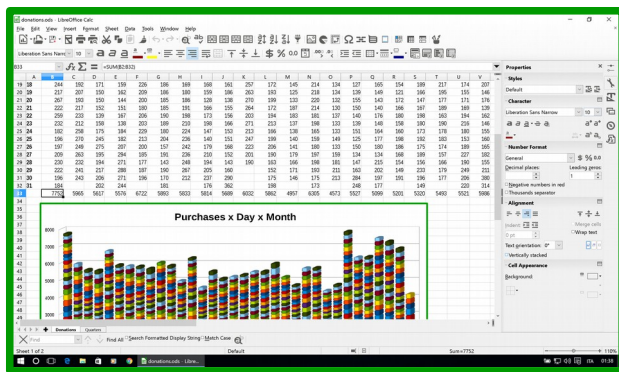


## Writer (Word Processing)

Writer has all the features you need from a modern, full-featured word processor. It's simple enough to use for a simple memo, and powerful enough to create complete books with contents, diagrams and indexes. You can concentrate on the message, while Writer will make it look great.

## Calc (Spreadsheet)

Calc is a spreadsheet program designed with the user in mind. First-time users find it intuitive and easy to learn, while professional data miners and number crunchers appreciate the comprehensive range of advanced functions.



## Impress (Presentation)

Impress is an easy and powerful tool for creating highly effective multimedia presentations, which can be enhanced with 2D and 3D clip art, transition styles, special effects, high-impact drawing tools and animations. Additionally, it will help you on stage to convey your message to your audience.

## Draw (Vector Drawings)

Draw lets you produce anything from a quick sketch to a complex plan, and gives you the power to communicate with graphics and diagrams. With a maximum page size of 300 by 300 centimetres, is an excellent package for large posters or technical drawings.

## Base (Database)

Base is a simple desktop database for the needs of most users, which can be used as a front end to enterprise-class databases.

## Math (Formula Editor)

Math can create mathematical and scientific formulas to add to text documents and presentations.

## Deploying LibreOffice

Deploying LibreOffice does not mean eradicating MS Office from each and every PC. The goal is to maximize the number of PCs using LibreOffice, fostering interoperability with MS Office by adopting a true ISO standard file format such as ODF.

Of course, it will be necessary to educate all users to rely on the ODF document standard to exchange files both internally and externally, as this is the only way to ensure true interoperability, and replace proprietary fonts with free fonts to avoid “visual” issues.

The deployment method can be selected according to the existing IT infrastructure. LibreOffice can be mass deployed on Windows by tweaking the .MSI package, and creating a Group Policy Object (GPO) to distribute the software package.

The deployment of LibreOffice needs to be planned in advance and should also be coordinated with a training schedule, to ensure that users will be able to use the software after the first training session.

The Document Foundation suggests deploying LibreOffice in large organizations with the backing of certified professionals: developers for Level 3 support, migrators for assistance in enterprise deployments, and trainers for organization of trainings. A list of these certified professionals is available on the website.